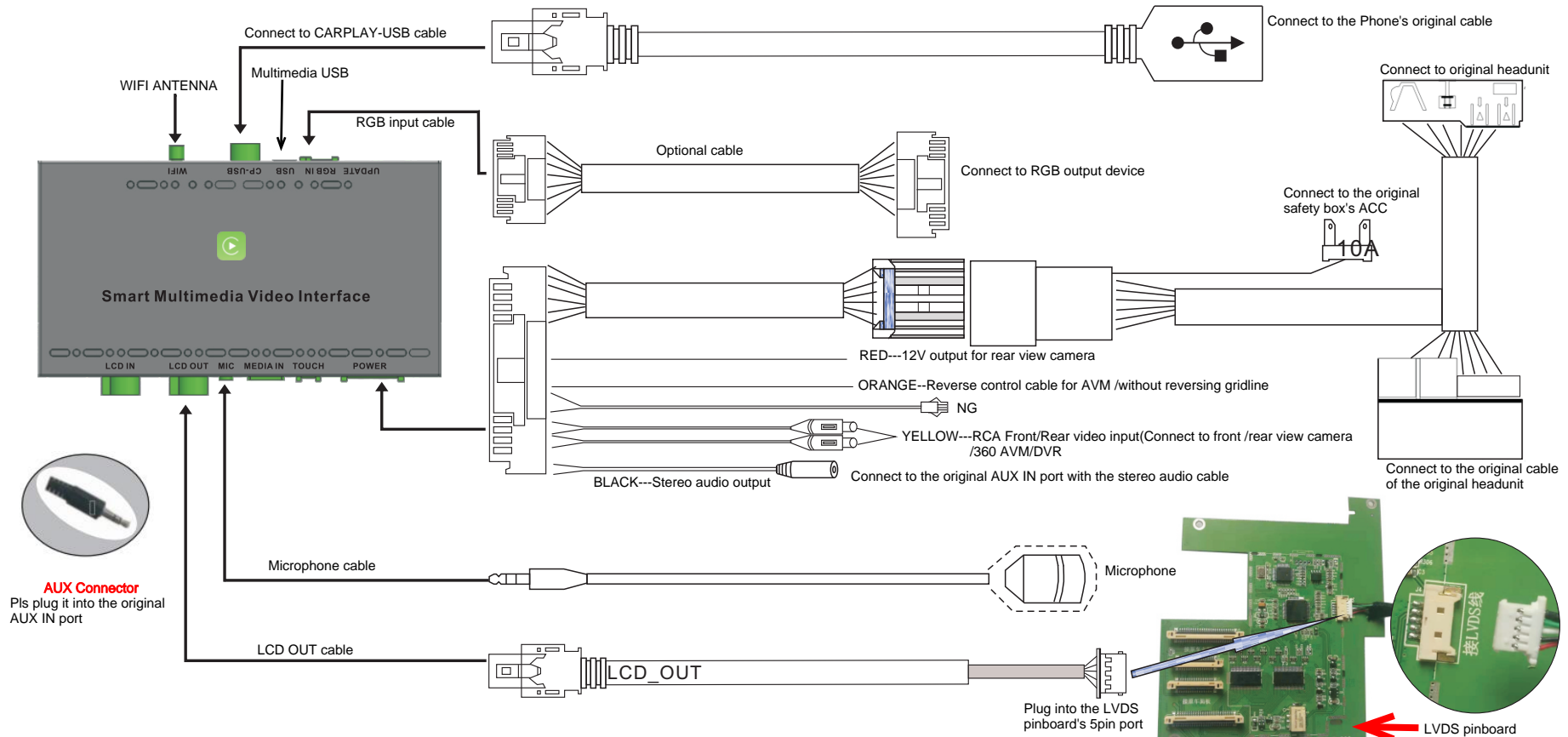


Porsche(PCM3.0-2009~2010) WIRING DIAGRAM ---LDS-PCM30-CP



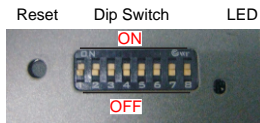
AUX Connector
Pls plug it into the original AUX IN port

Plug into the LVDS pinboard's 5pin port

DIP SWITCH SETTING

(After changing the dip code, press "reset" or power-on again)

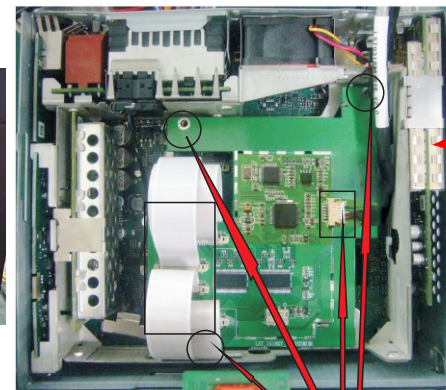
PIN 1	OFF/ON	NG / NG
PIN 2	OFF/ON	NG / Touch point coordinate correction, and then turn "OFF"
PIN 3	OFF/ON	NG/PCM3.0 system
PIN 4	OFF/ON	Reversing gridline/Enable 360 panoramic
PIN 5	OFF/ON	NG / NG
PIN 6	OFF/ON	Rear view camera CVBS input / RGB input
PIN 7	OFF/ON	NG / NG
PIN 8	OFF/ON	After market rear view camera/Original rear view camera



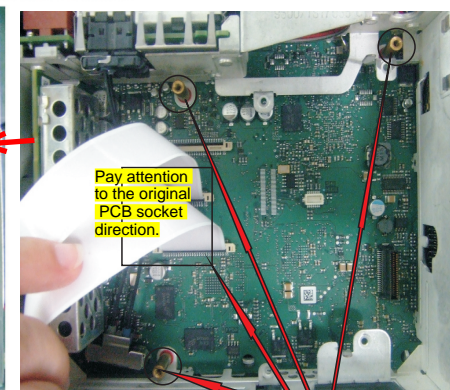
REMARK:Please keep in the AUX interface when switch the CarPlay interface



- 1) Short press and hold "NAVI" button to switch Carplay MENU, short press "NAVI" button again, exit the switch MENU.
- 2) Short press "PHONE" button to open "Siri".
- 3) Knob and NEXT/Front key to control up/down /right/left/ok.



- A**
- 1) Install the LVDS pinboard with the original 3pcs screws, then Plug in the 30&50pin FPC cable to the pinboard, install the LCD OUT cable to the pinboard (The LCD OUT cable need to Insert from the rear housing of host into the interior of the host).
 - 2) Reverser the installation of the host.



- B**
- 1) Unscrew the original 3PCS screws and install 17MM copper column respectively;
 - 2) Plug in the 30PIN&50PIN FPC cable (Pay attention to the socket direction) to the original PCB board.