

ZXMSP2

SOT Cable



ZXM500.1



Speaker Wire



Installation Tools Required

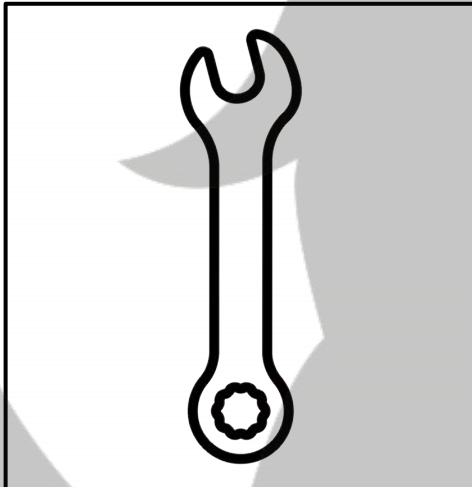
Vehicle used for installation:*

Polestar 2 (2019 ->)

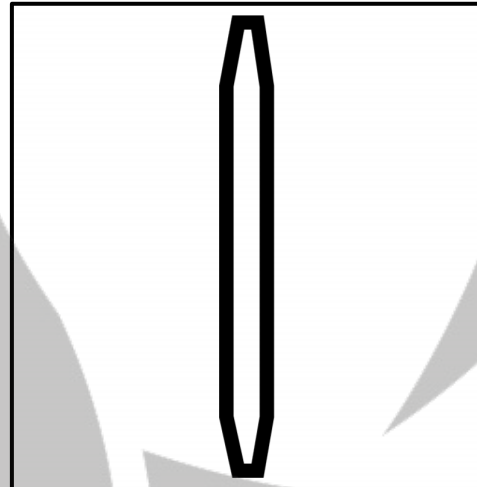
Harman Kardon

**Some differences may occur between different car and year models.*

8mm Wrench or Socket



Plastic Pry Tool



PHOENIX GOLD

ZXMSP2 Installation 1

Tools required:



1x 8mm Wrench

1. Remove the luggage floor



2. Locate the two bolts



3. Unscrew the two bolts



4. Pull up the threshold to remove it



ZXMSP2 Installation 2

Tools required:

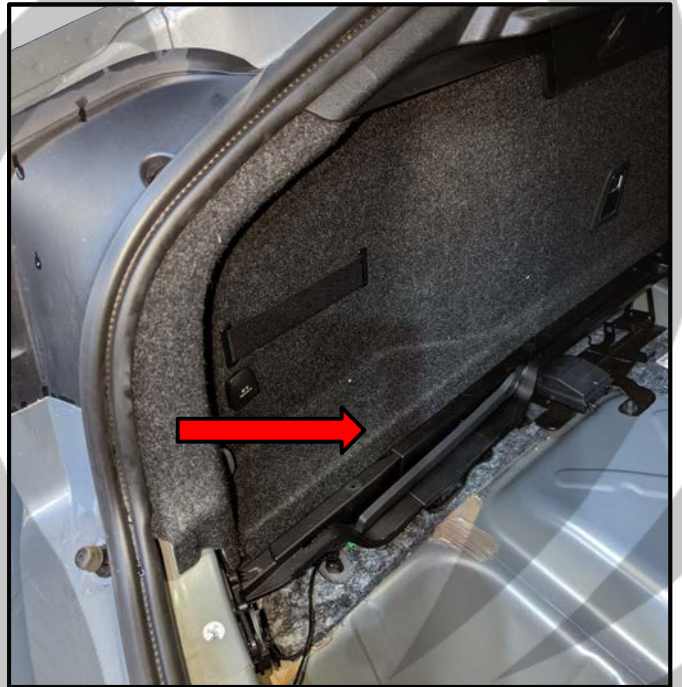


1x Plastic Pry Tool

5. Remove the luggage mat



6. Pull out the left side panel



7. Left side panel pulled out



8. Remove the two clips



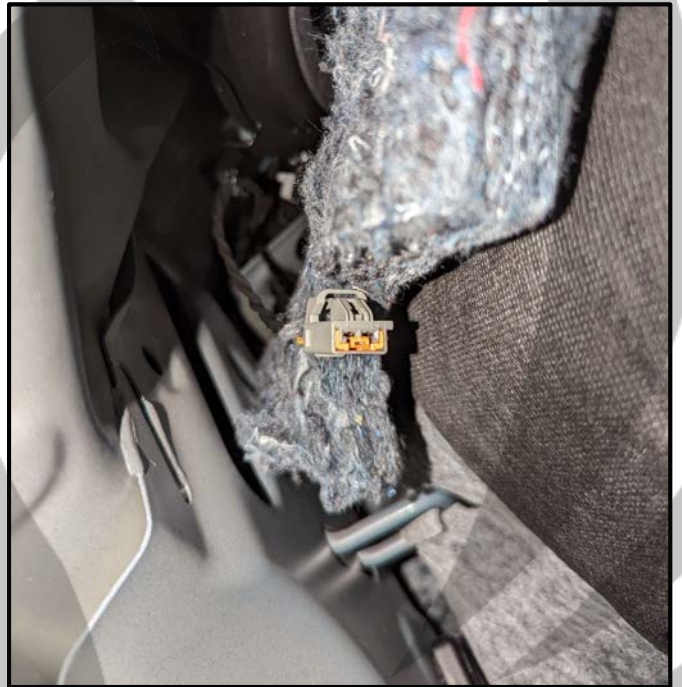
ZXMSP2 Installation 3

Tools required:

9. Disconnect the connector



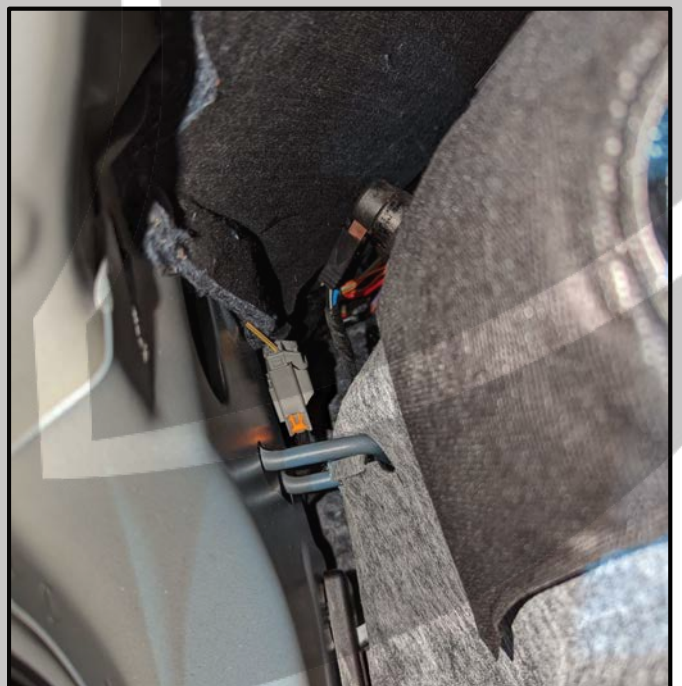
10. Connector disconnected



11. Connect connector to SOT cable



12. Route SOT cable under the carpet



ZXSKP2 Installation 4

Tools required:

13. Route SOT cable under the panel



14. Cable routed under the panel



15. Route the cable at the back



16. Cable tie the cable at the back



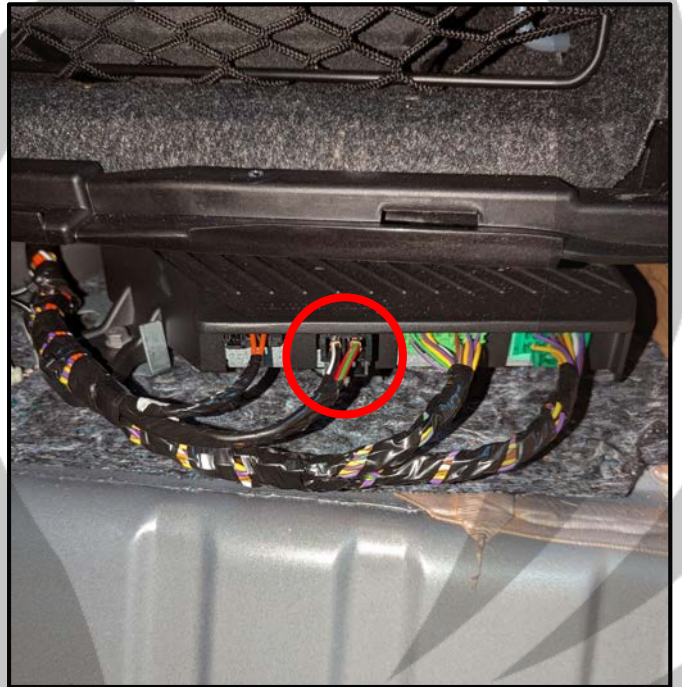
ZXMSP2 Installation 5

Tools required:

17. Amp at the right side of the trunk



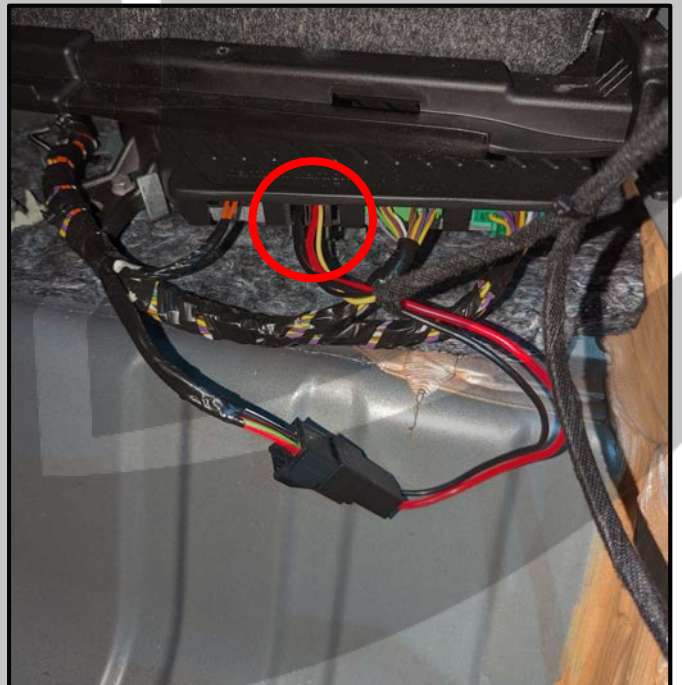
18. Disconnect the power connector



19. Connect SOT cable to connector



20. Connect SOT connector to amp



ZXMSP2 Installation 6

Tools required:

21. Route SOT to the front of the trunk



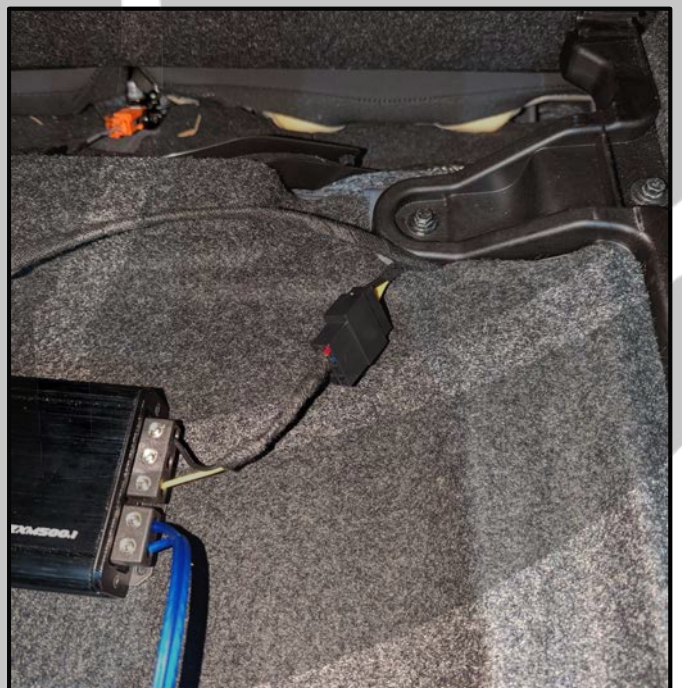
22. Put back the trunk carpet



23. Install the cables to the ZXM500.1



24. Connect ZXM500.1 in the car



ZXMSP2 Installation 7

Tools required:

21. Connect the high-level connector



22. Run speaker wire to subwoofer



23. Reassemble trunk in reverse order



24. Install is now complete



On Behalf of the Phoenix Gold team,
Thank you for choosing us!

Your installation is complete and we hope that your new upgraded system will bring you joy and happiness for many years to come when listening to your favorite music. As always, our goal is bringing you The Gold Standard in Sound.



www.phoenixgold-eu.com